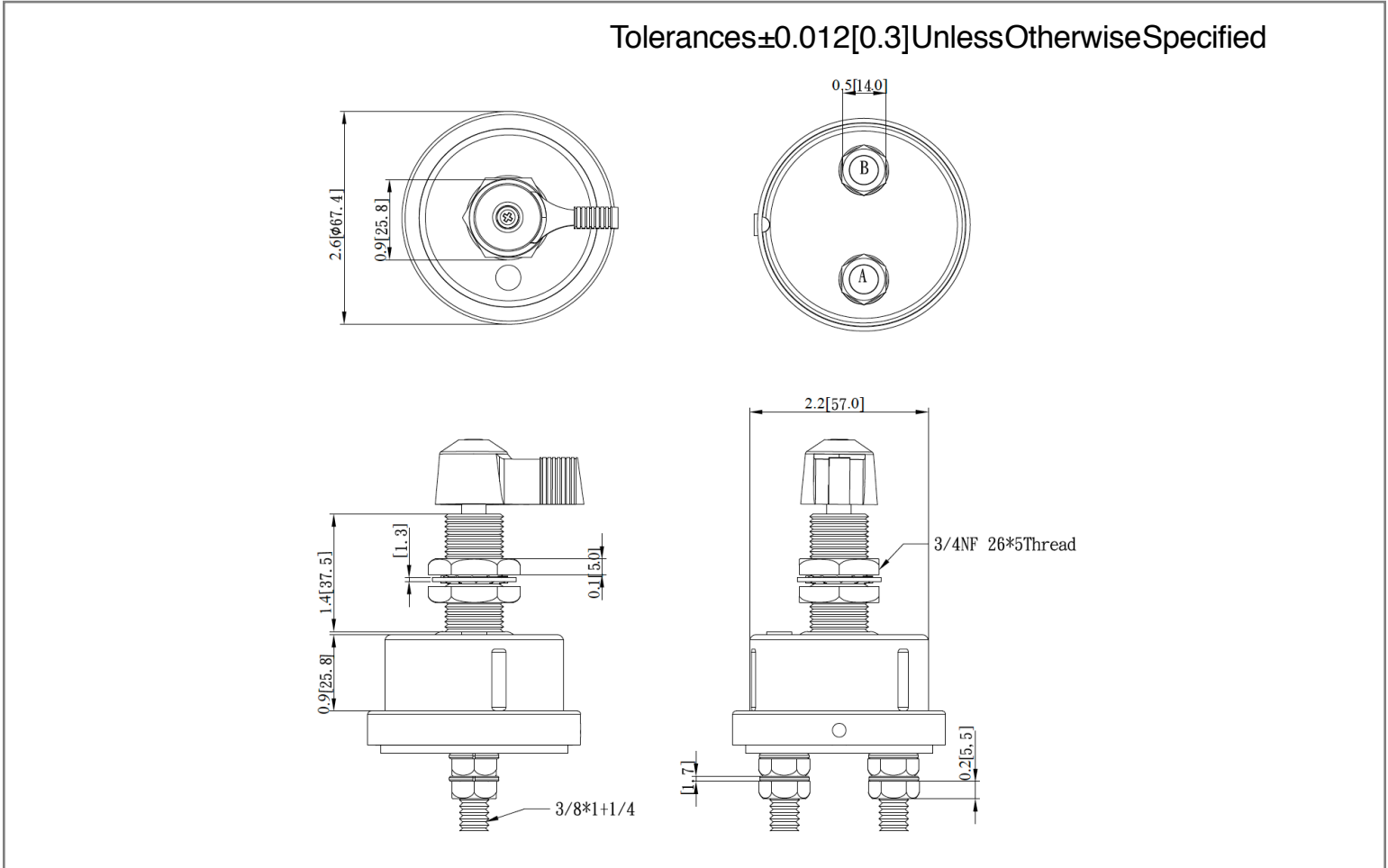
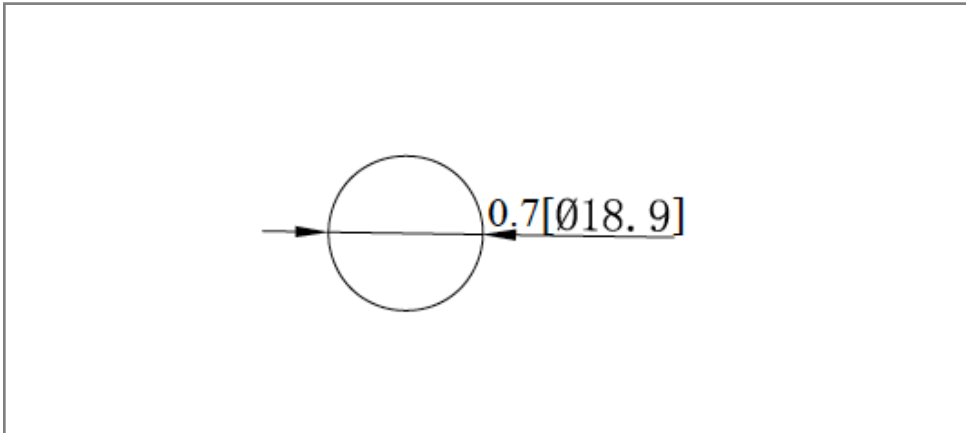


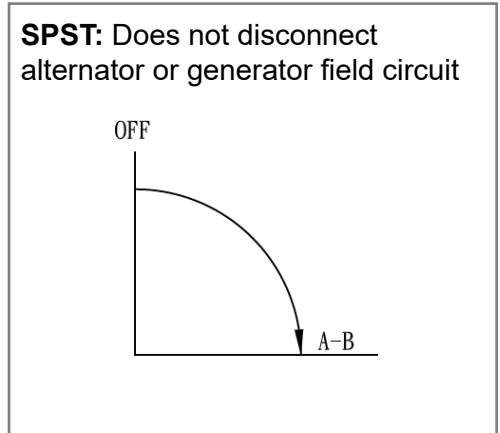
Mechanical Dimensions: Inches [mm]



Mounting Hole



Circuit Diagram



Electrical Specification

Continuous Rating	175A 25VDC
Intermittent Rating	1000A, 15sec ON 5 min OFF
Insulation Resistance	DC 500V 100M ohm Min
Dielectric Strength	AC 1000V 1 minute

Material Specification

Chrome-plated lever	
Body Material	Brass, Trivalent Zinc Plated

<b>Rev</b>	<b>Date of issue</b>	<b>Revision Notes</b>	<b>Designed</b>	<b>Approved</b>
B	01-26-2024	Initial Drawing	RC	OF