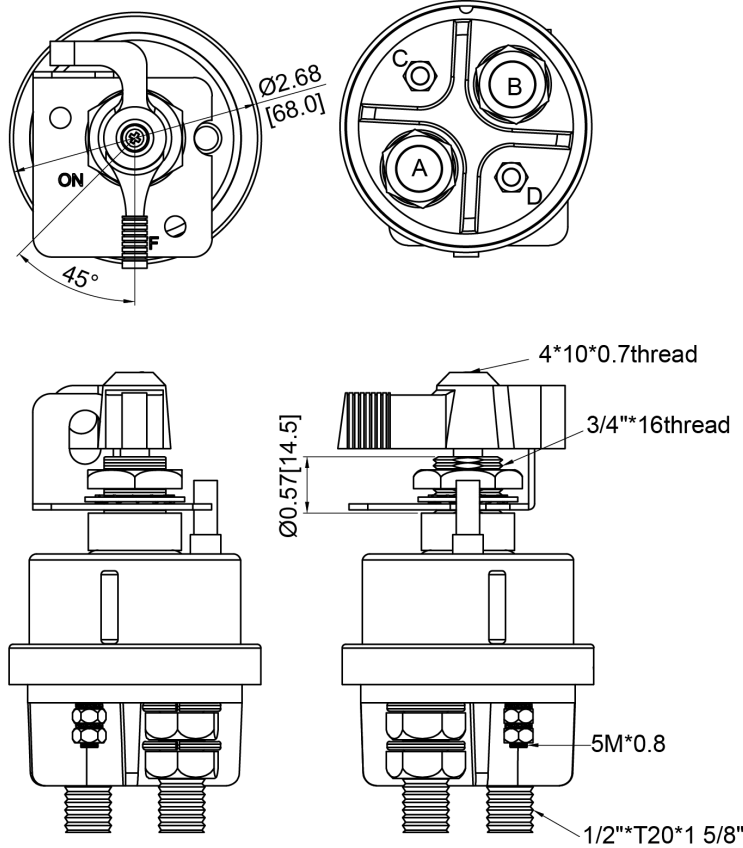
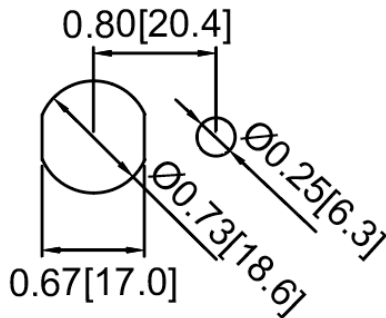


Mechanical Dimensions: Inches [mm]

Tolerances ± 0.012 [0.3] Unless Otherwise Specified

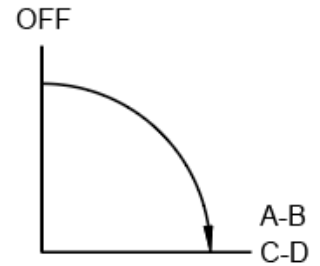


Mounting Hole



Circuit Diagram

DPST: For battery and alternator or generator field circuit.



Electrical Specifications

Operating Voltage	32VDC
Continuous Rating	24V 300A (large studs) 24V 20A (small studs)
Intermittent Rating	2000A for 15secs intervals (large studs)
Insulation Resistance	DC 500V 100Mohm Min.
Dielectric Strength	AC 1000V 1 minute

Materials Specifications

Steel construction
Sealed with O-rings at base and mounting stem
Case and terminal insulator
Copper terminals
IP65
Includes Lock-Out Kit

Rev	Date of issue	Revision Notes	Designed	Approved
C	03-01-2024	changed to show lock out kit	RC	OF