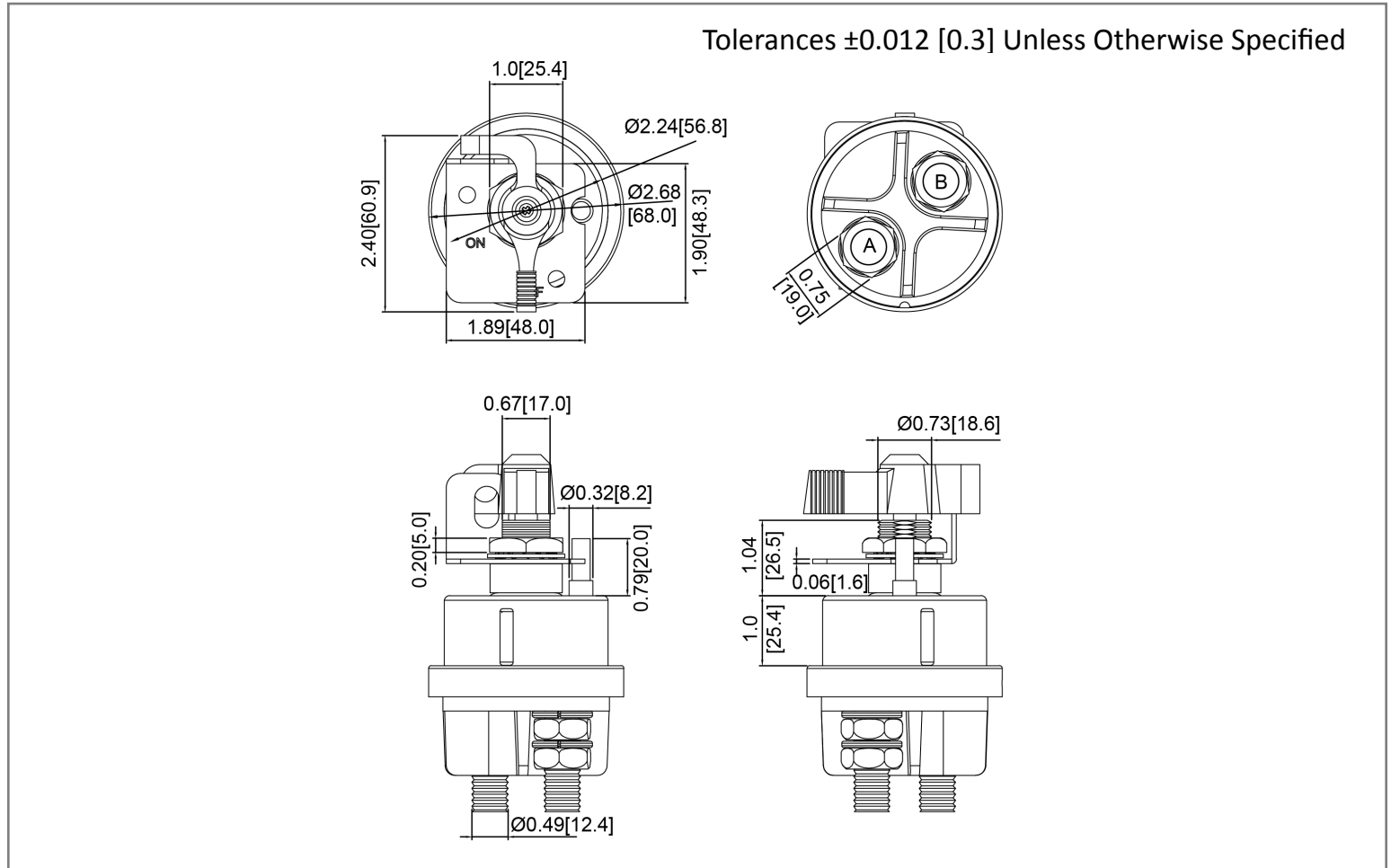
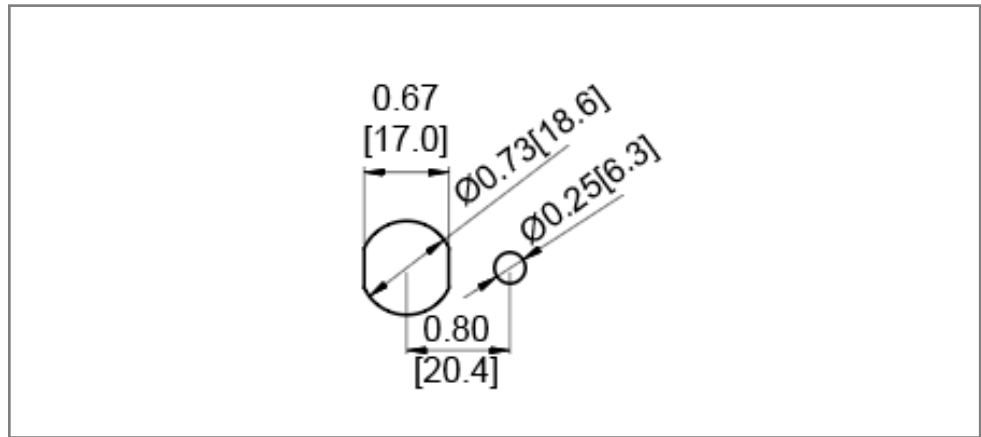


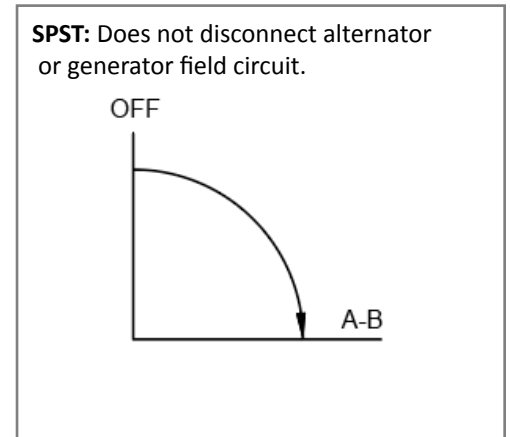
Mechanical Dimensions: Inches [mm]



Mounting Hole



Circuit Diagram



Electrical Specifications

Operating Voltage	32VDC
Continuous Rating	24V 300A for 8 hours
Intermittent Rating	2000A for 5secs intervals
Inrush Rating	1000A for 30secs intervals
Insulation Resistance	DC 500V 100Mohm Min.
Dielectric Strength	AC 1000V 1 minute

Materials Specifications

Steel construction
Sealed with O-rings at base and mounting stem
Case and terminal insulator
Copper terminals
IP67
Includes Lock-Out Kit

Rev	Date of issue	Revision Notes	Designed	Approved
C	03-01-2024	changed to show lock out kit	RC	OF