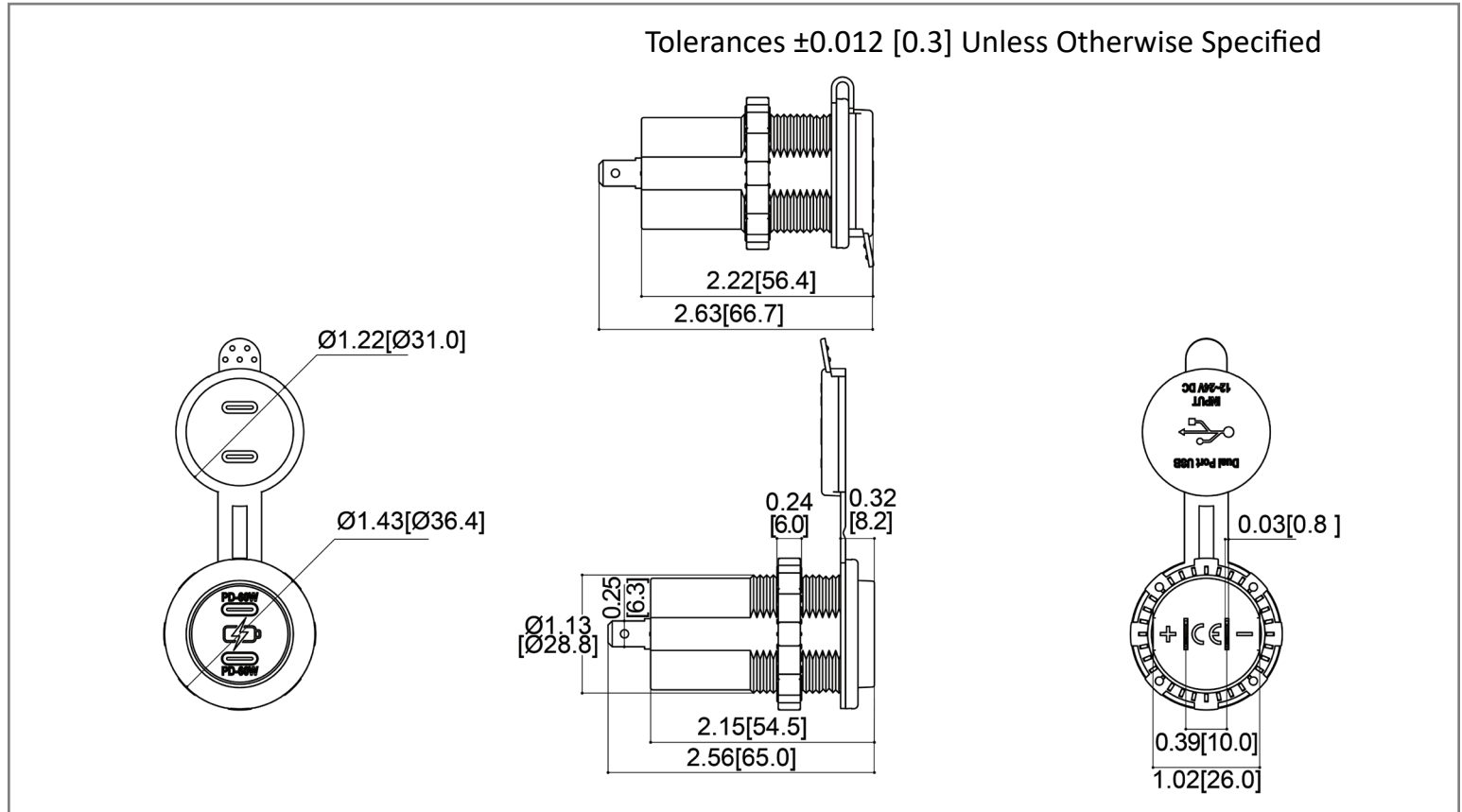
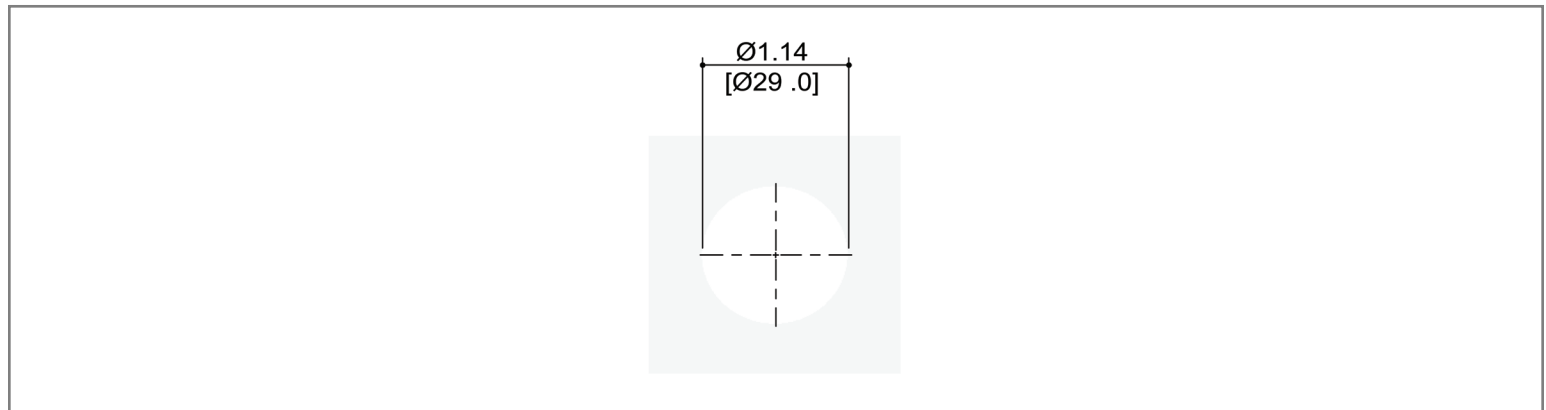


**Mechanical Dimensions: Inches [mm]**



**Mounting Hole**



**Electrical Specifications**

Nominal Voltage	12/24VDC
Operating Voltage	12V/32VDC (max)
Peak Voltage	36VDC (max) (3~4 sec)
Output Rating (12VDC Input)	Type C PD output: 5V-12V; 36W max Type C PD output: 5V-12V; 36W max Type C + C output: 36W + 36W
Output Rating (24VDC Input)	Type C PD output: 5V-20V; 60W max Type C PD output: 5V-20V; 60W max Type C + C output: 60W + 60W
Operating Frequency	100~150Khz
Current Draw	20mA
Operation Temperature	-20 °C ~ 60 °C

**Material Specifications**

Two Type C USB Connections	
Terminals Material	Copper; Nickel Plated
Ingress Protection	IP65 (when cap is closed)
Laser Etched Front with Backlight Effect	

**Rev      Date of issue      Revision Notes**

**Designed      Approved**

C	03-07-2025	Initial Drawing	RC	OF
---	------------	-----------------	----	----