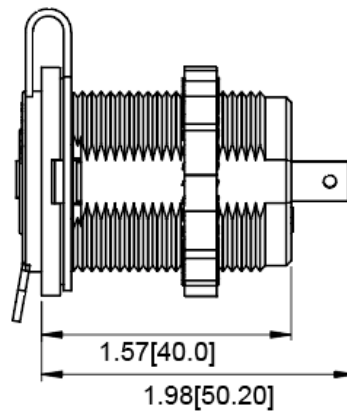
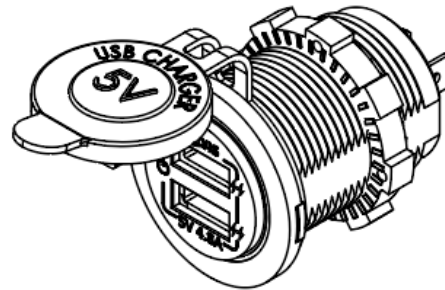
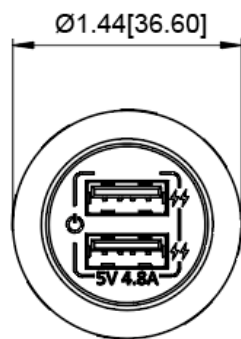
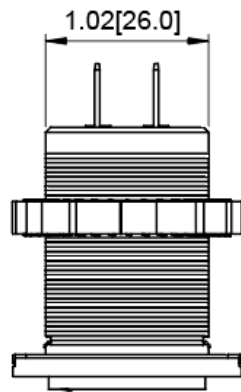
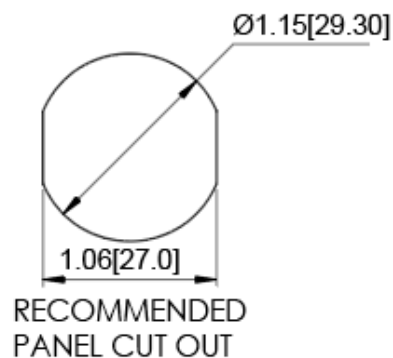




## Mechanical Dimensions: Inches [mm]

Tolerances  $\pm 0.012$  [0.3] Unless Otherwise Specified

## Mounting Hole



## Electrical Specifications

Input Rating	12/24 VDC
Output rating (12VDC input)	Type A output: 5V 2.4A Type A output: 5V 2.4A Type C PD output: 5V-12V; 36W max
Output rating (12VDC input)	Type A QC output: 5V 2.4A Type C PD output: 5V-20V; 45W max Type A + C output: 5V 2.4A + 5V 2.4A
Certifications	 

## Material Specifications

Laser Etched Front Cover with Backlight Effect	
LED power saving touch switch prevents battery drainage	
Body Material	Flame Retardant Nylon (Glass Fiber Reinforced)
Ingress Protection	IP66 (When not in use and cap is securely closed)
Type A USB	

# Power Adapter - USB Socket

## A8-USB2-1-B-4.8A-T



Rev	Date of issue	Revision Notes	Designed	Approved
B	03-07-2025	Initial Drawing	RC	OF