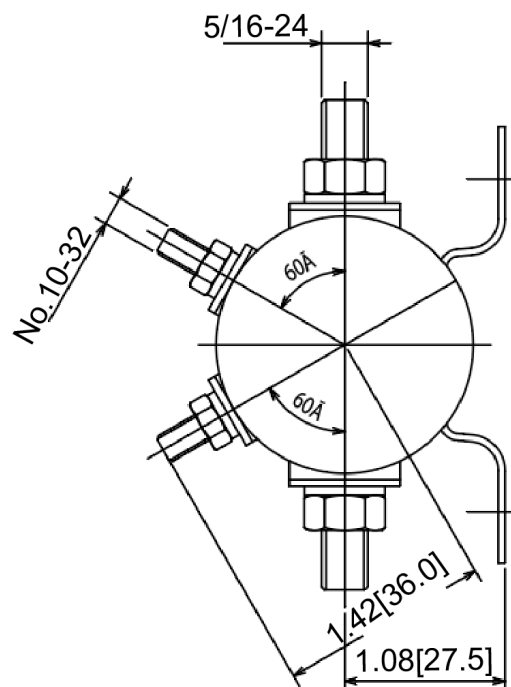
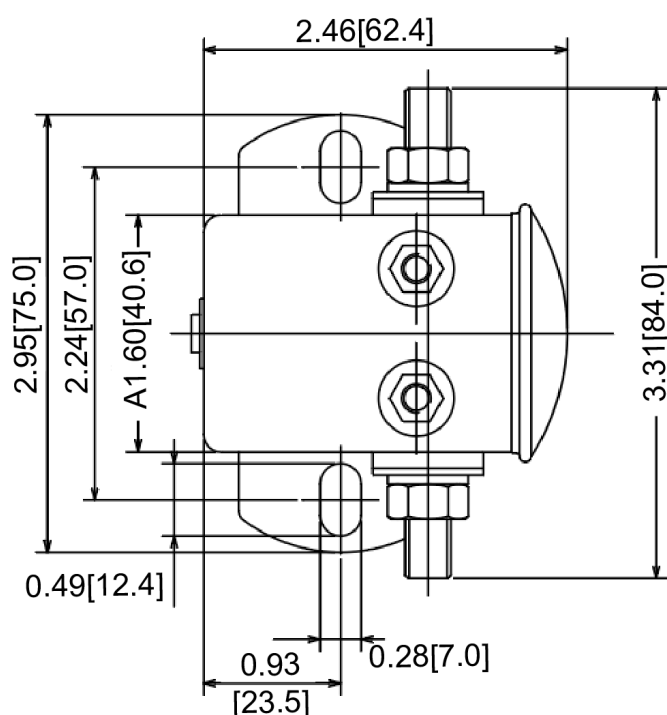


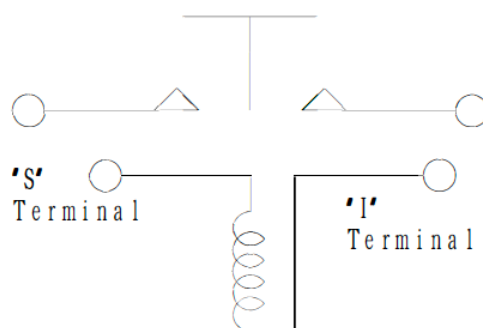
Mechanical Dimensions: Inches [mm]

Tolerances ± 0.012 [0.5] Unless Otherwise Specified



Circuit Diagram

Continuous Duty. Grounded base



Electrical Specifications

Continuous Rating 12V 80A

Maximum Current (Make) 150A

Coil Resistance 15 ± 2 Ohms

Operating Voltage <9VDC

Release Voltage >1.2VDC

Material Specifications

Iron plates with trivalent zinc body

Copper terminals

Load terminals 5/16"- 24 Thread, Coil terminals No.10-32 Thread

Bracket Mounting Holes: 9/32" x 3/4", 2 13/64" on centers.

Straight bracket

Solenoid

HDS2-I4-12



Rev	Date of issue	Revision Notes	Designed	Approved
C	12-11-2025	Initial Drawing	RC	OF