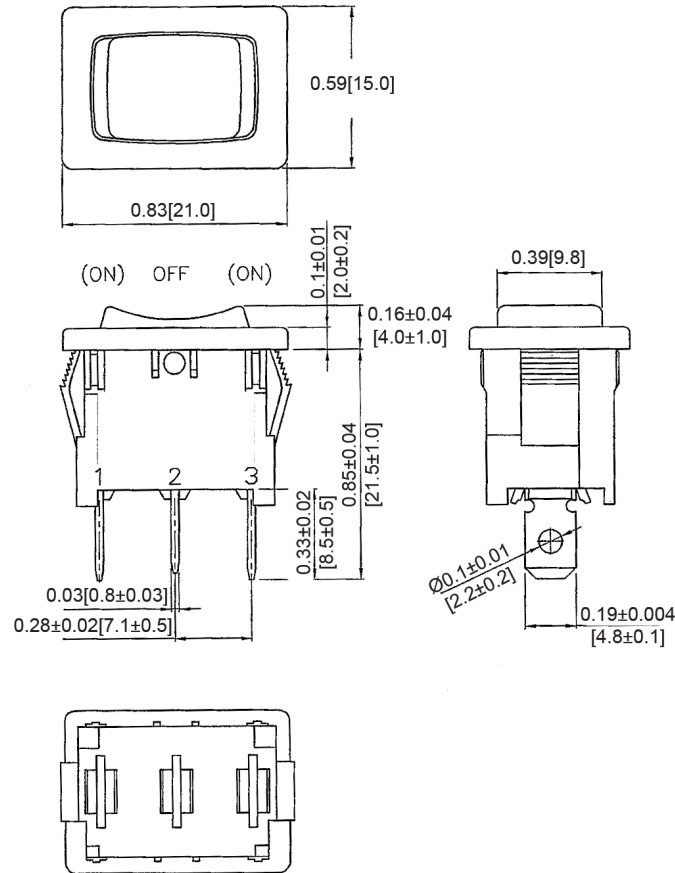
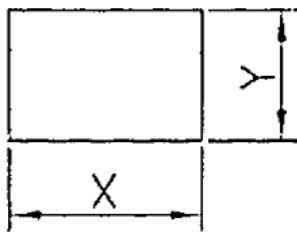


Mechanical Dimensions: Inches [mm]

Tolerances ± 0.012 [0.3] Unless Otherwise Specified

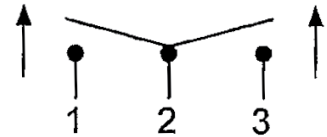
Mounting Hole





Thickness	X	Y
0.03~0.05 [0.75~1.25]	0.75 [19.2~0.1]	0.51 [13.0~0.1]
0.05~0.1 [1.25~2.0]	0.76 [19.4~0.1]	0.51 [13.0~0.1]
0.1~0.12 [2.0~3.0]	0.77 [19.8~0.1]	0.51 [13.0~0.1]

Circuit Diagram

3P SPDT (ON)-OFF-(ON)



Electrical Specifications

DC Rating	16A 12V DC, 6A 28V DC 
AC Rating	16A 125V AC 1/3HP, 10A 250V AC 1/2HP 16(4)A 125/250V AC 
Contact Resistance	50m ohm Max
Insulation Resistance	DC 500V 100M ohm Min
Dielectric Strength	AC 1500V 1 minute

Material Specifications

Frame	Black, Nylon 66
Actuator	Black, Nylon 66

Operation Temperature -25°C~85°C

Rocker Switch

RF1-1G-DC-2-B



Rev Date of issue Revision Notes

Designed Approved

B	06-08-2021	Initial Drawing	RC	OF
---	------------	-----------------	----	----