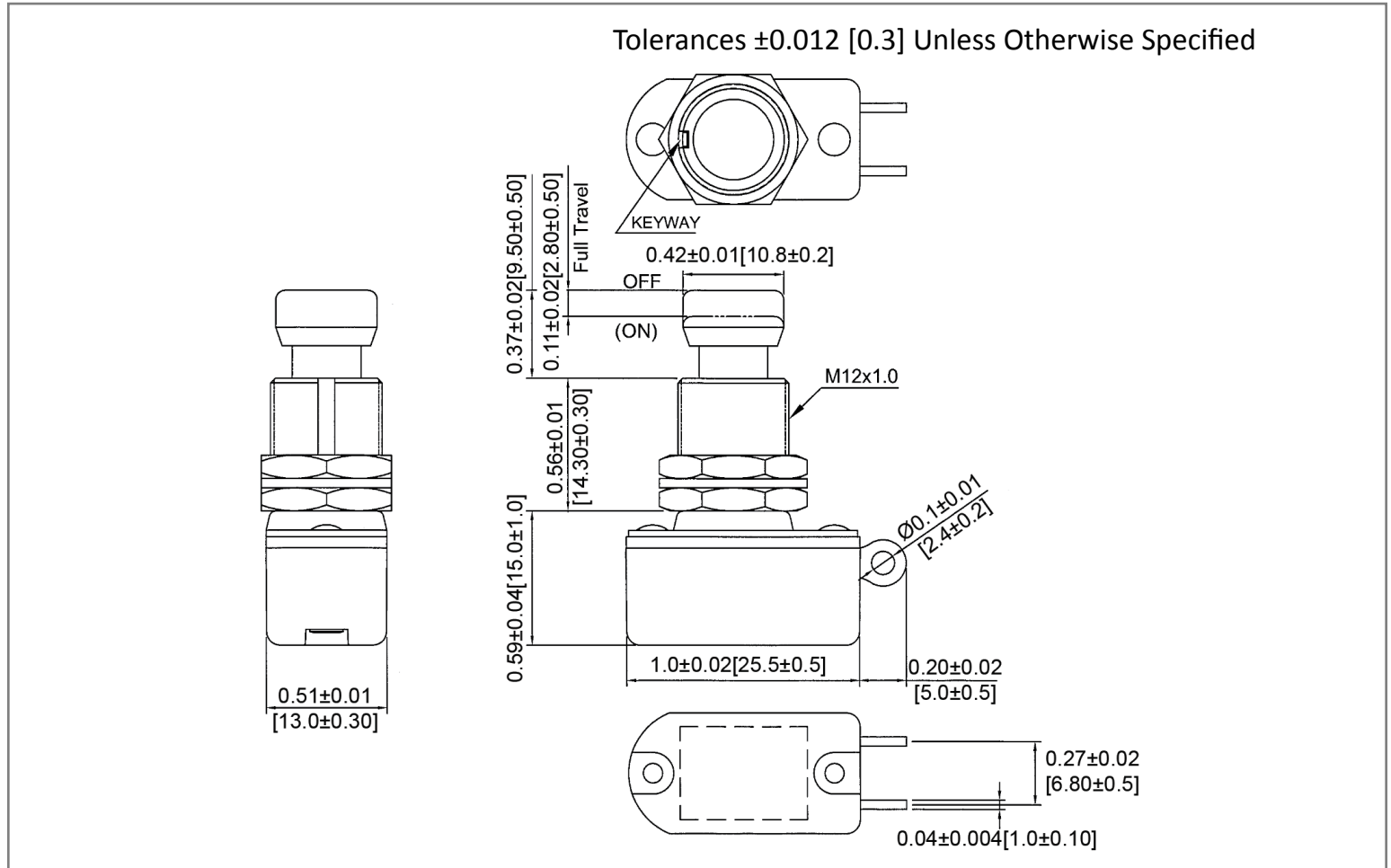
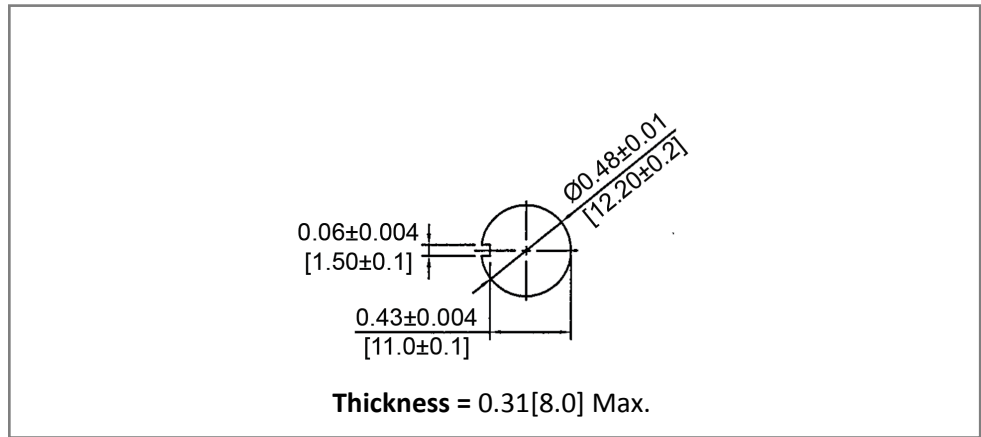


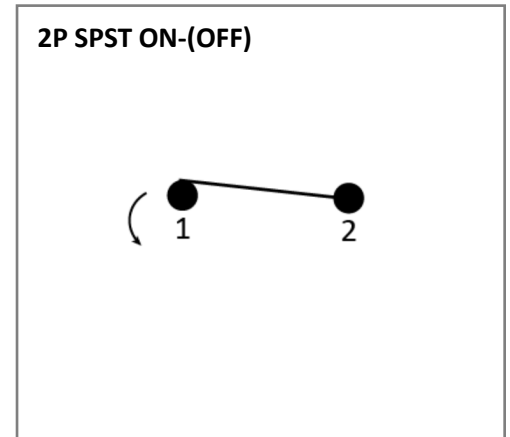
**Mechanical Dimensions: Inches [mm]**



**Mounting Hole**



**Circuit Diagram**



**Electrical Specifications**

<b>Rating</b>	10A 12V DC, 6A 125V AC 3A 250V AC
<b>Contact Resistance</b>	50m ohm Max.
<b>Insulation Resistance</b>	DC 500V 100M ohm Min
<b>Dielectric Strength</b>	AC 1000V 1 minute
<b>Operation Temperature</b>	-20°C~65°C

**Material Specifications**

<b>Frame</b>	Black, PF
<b>Actuator</b>	Ni-plated, Brass
	2 Hex Nut Assy
	1 Spring Washer Assy

**Rev**    **Date of issue**    **Revision Notes**

**Designed**    **Approved**

A	04-26-2021	Initial Drawing	RC	OF
---	------------	-----------------	----	----