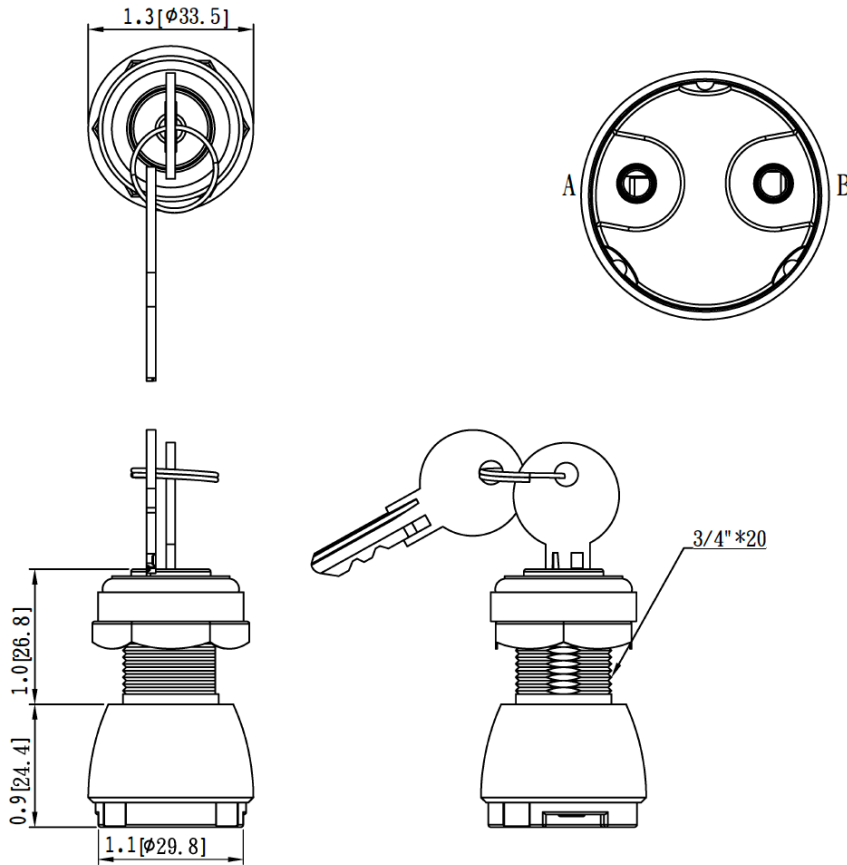
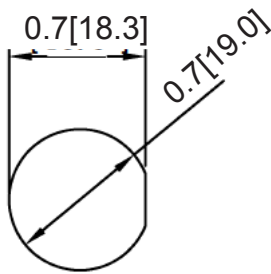


**Mechanical Dimensions: Inches [mm]**

Tolerances  $\pm 0.012$  [0.5] Unless Otherwise Specified

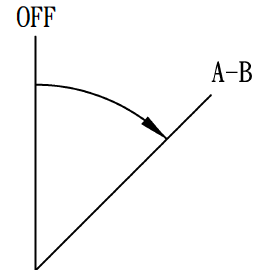


**Mounting Hole**



**Circuit Diagram**

**SPST ON-OFF**



**Electrical Specifications**

**Continuous Rating** 15A 6VDC, 10A 12VDC

**Material Specifications**

Zinc diecast construction

Bronze terminals

2 Brass keys. Key removable in OFF position only

| Rev | Date of issue | Revision Notes  | Designed | Approved |
|-----|---------------|-----------------|----------|----------|
| A   | 11-13-2019    | Initial Drawing | RC       | OF       |