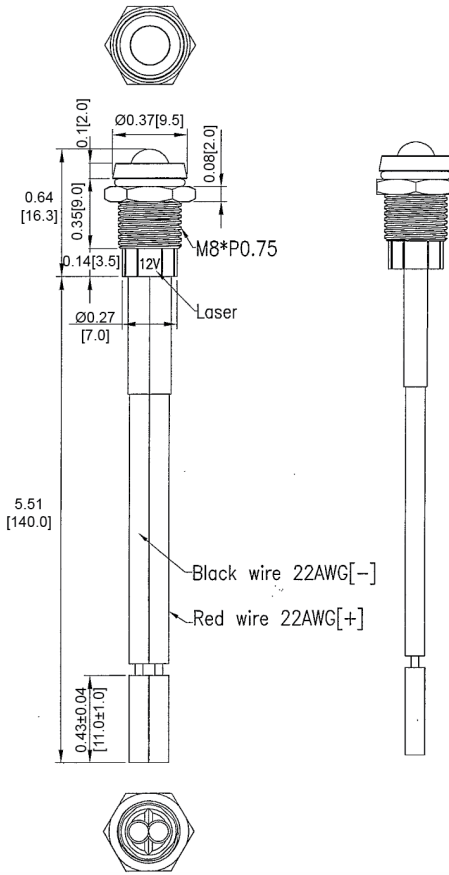


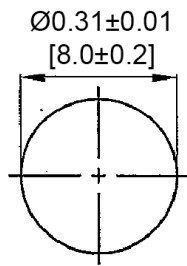
**Mechanical Dimensions: Inches [mm]**

Tolerances  $\pm 0.012$  [0.3] Unless Otherwise Specified



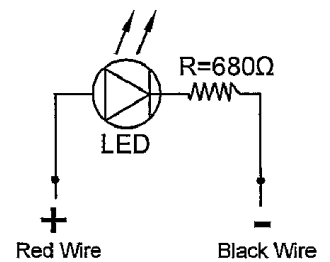
LED Color	Yellow
Lens Color	Colorless Clear
VF	2.1V
IF	20mA
Iv (mcd)	6000mcd
Viewing Angle	20°

**Mounting Hole**



Panel Thickness: 0.20 [5.0] max

**Circuit Diagram**



**Electrical Specifications**

Voltage Rating	12VDC
Insulation Resistance	DC 500V 1000M ohms
Dielectric Strength	AC 500V 1 min
Operating Temperature	-20°C ~ 80°C

**Material Specifications**

	IP67
LED Size	5mm
Body	Brass, Nickel Plated, Black
Base	Nylon 66, White
Terminal	Wire 22AWG UL1015, 125mm

**Rev**    **Date of issue**    **Revision Notes**

**Designed**    **Approved**

A	11-30-2020	Initial Drawing	RC	OF
---	------------	-----------------	----	----