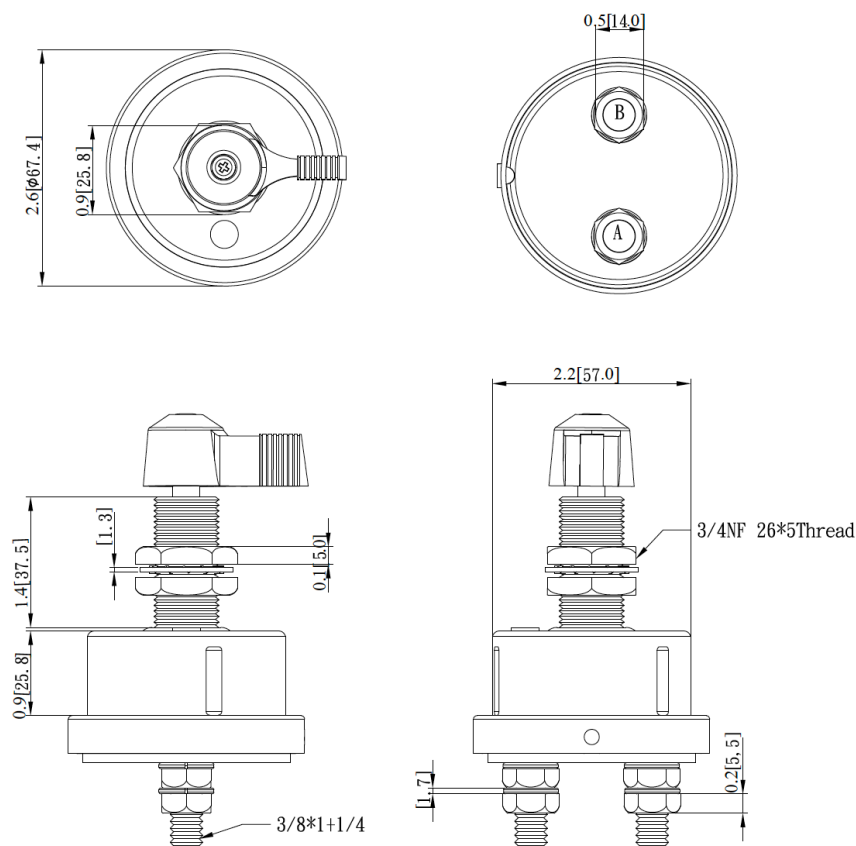
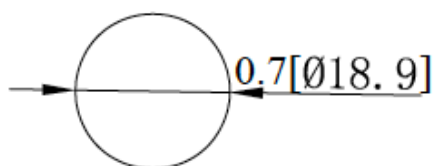


## Mechanical Dimensions: Inches [mm]

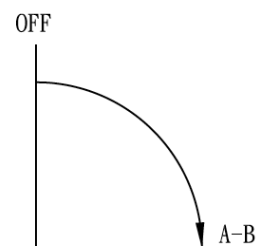
Tolerances  $\pm 0.012$  [0.3] Unless Otherwise Specified

## Mounting Hole



## Circuit Diagram

**SPST:** Does not disconnect alternator or generator field circuit.



## Electrical Specifications

Continuous Rating	175A 25VDC
Intermittent Rating	1000A, 15sec ON 5 min OFF
Insulation Resistance	DC 500V 100M ohm Min
Dielectric Strength	AC 1000V 1 minute

## Material Specifications

Body Material	Copper
	Chrome-plated lever
	Brass case

Battery Disconnect

HDB5-1A-3-A



Rev	Date of issue	Revision Notes	Designed	Approved
B	10-25-2024	Added Body Material	RC	OF